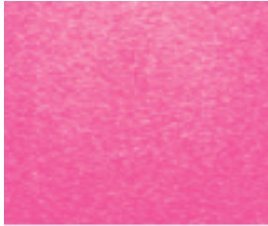


# Standard Pawprint Clay Colors

---



Pink Glitter



Princess Pearl



Candy Pink



Violet Glitter



Purple



Red



Just Orange



Yellow



Leaf Green



Blue



Navy Pearl



Teal Pearl



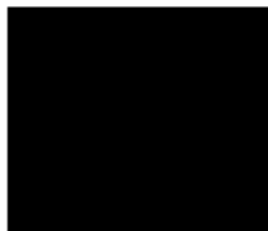
Gold



Silver



Elephant Gray



Black



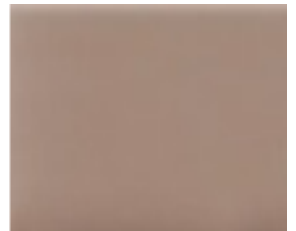
White



Pearl



Tan



Hazelnut



Suede Brown

We can swirl different colors together. If the standard colors are not close to your pet's colorings, we can try to mix a few colors together to make a custom color. Usually we will paint pawprints that are swirled a complementary color so that the pawprint stands out more. We can either leave the solid colors plain or paint the print.

# Non Painted with Solid Clay



# Plain Clay with Paint



# Solid Clay with Paint



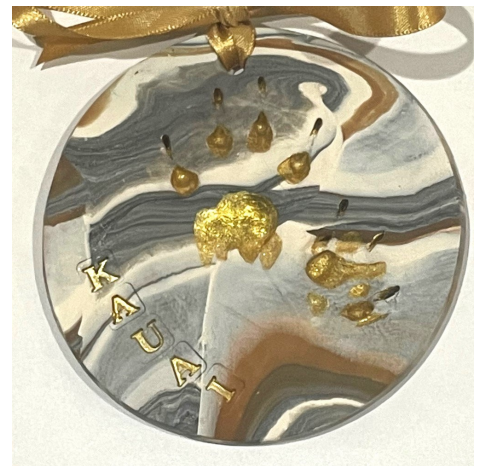
# Brown/Orange Coat Swirled Pawprints



# Brown/Orange Coat Swirled Pawprints



# Brown/Orange Coat Swirled Pawprints



# Black and White Coat Swirled Pawprints





# Fun Colored Swirled Pawprints

